



**MONOBLOCK
DIRECTIONAL
CONTROL VALVES**

P40

P40 Series Monoblock Directional Control Valves

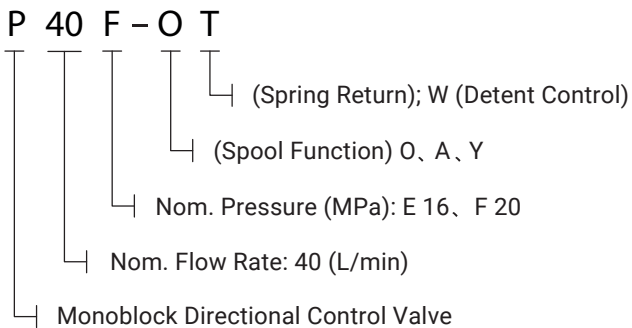
APPLICATION & FEATURES

P40 series valves with middle-high pressure monoblock construction is developed based on Europe technology.

- Inner check valve: The check valve inside the valve body is to insure the hydraulic oil not to be returned.
- Inner relief valve: The relief valve inside the valve body is able to adjust the hydraulic system working pressure.
- Oil way: Parallel circuit, power beyond option
- Control Way: Manual control, pneumatic control, hydraulic and electric control for optional.
- Valve construction: monoblock construction, 1-7 levers.
- Spool Function: O,Y, P, A.
- Option:Hydraulic lock is available to be added on A and B port.
- Available manual, pneumatic control, electric and pneumatic control, hydraulic and electric control and etc.



MODEL CODE



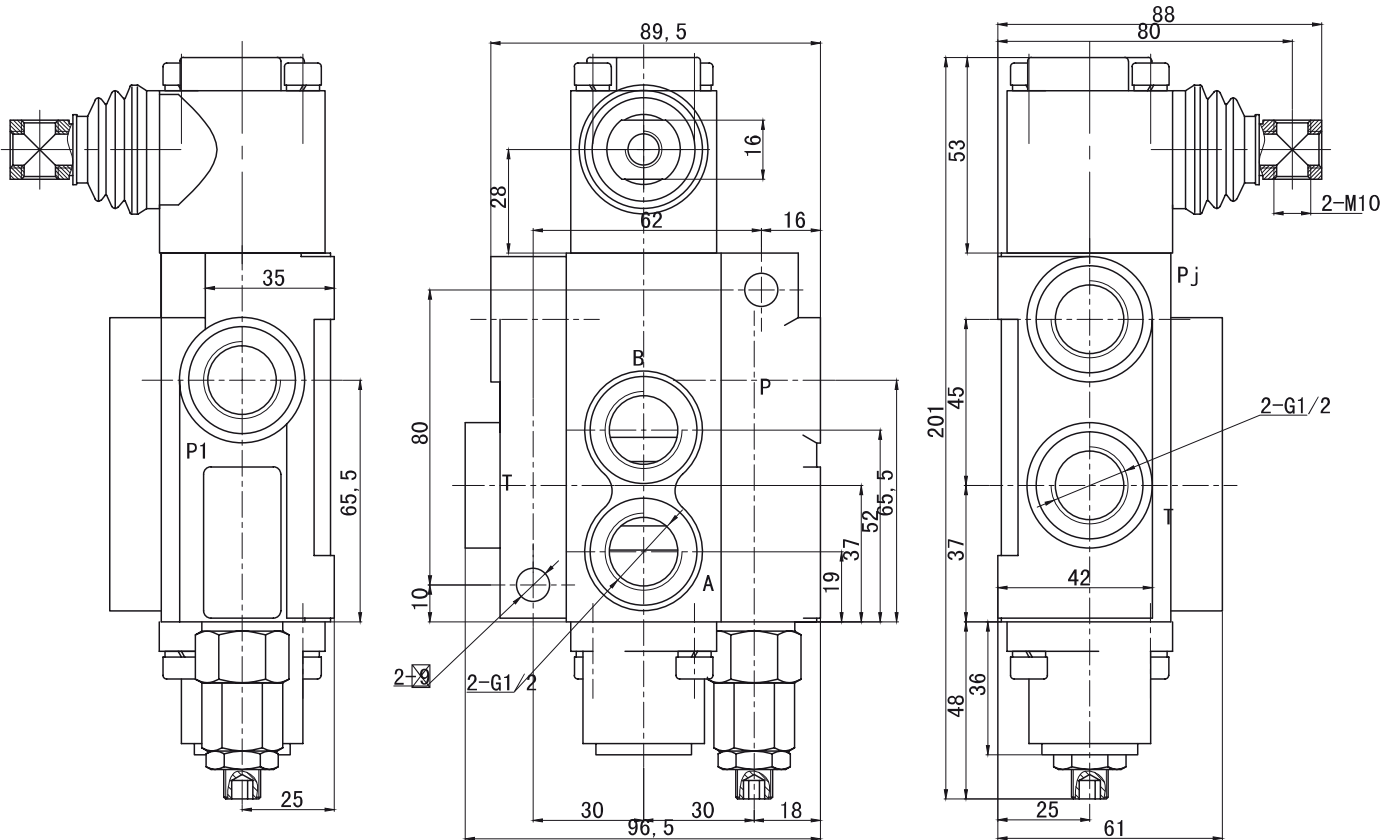
PARAMETERS

Nom. Pressure (MPa)	Max. Pressure (MPa)	Nom. Flow rate (L/min)	Max. Flow rate (L/min)	Back Pressure (MPa)	Hydraulic oil		
					Tem. rang (°C)	Visc. rang (mm ² /S)	Filtrating accuracy (μm)
20	31.5	40	40	≤1	-20~+80	10~400	≤10

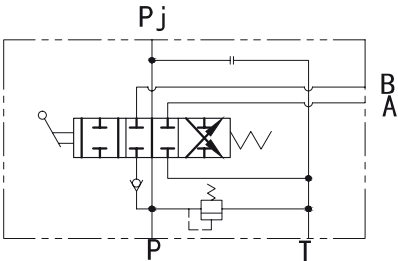
P40

P40 Series Monoblock Directional Control Valves

MODEL P40 DIMENSIONAL DATA



SCHEMATIC DIAGRAM



TECHNICAL PARAMETER

- 1. Nominal Pressure 20MPa
- 3. Rated Flow 40L/min

Note: Special features not listed can often be made to your specifications. Please consult your sales representative.

P80

P80 Series Monoblock Directional Control Valves

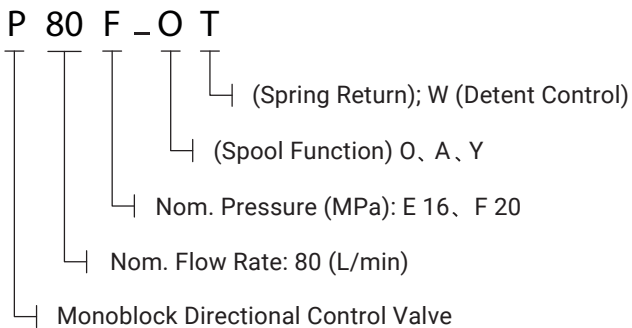
APPLICATION & FEATURES

P80 series valves with middle-high pressure monoblock construction is developed based on Europe technology.

- Inner check valve: The check valve inside the valve body is to insure the hydraulic oil not to be returned.
- Inner relief valve: The relief valve inside the valve body is able to adjust the hydraulic system working pressure.
- Oil way: Parallel circuit, power beyond option
- Control Way: Manual control, pneumatic control, hydraulic and electric control for optional.
- Valve construction: monoblock construction, 1-6 levers.
- Spool Function: O,Y, P, A.
- Option:Hydraulic lock is available to be added on A and B port.
- Available manual, pneumatic control, electric and pneumatic control, hydraulic and electric control and etc.



MODEL CODE



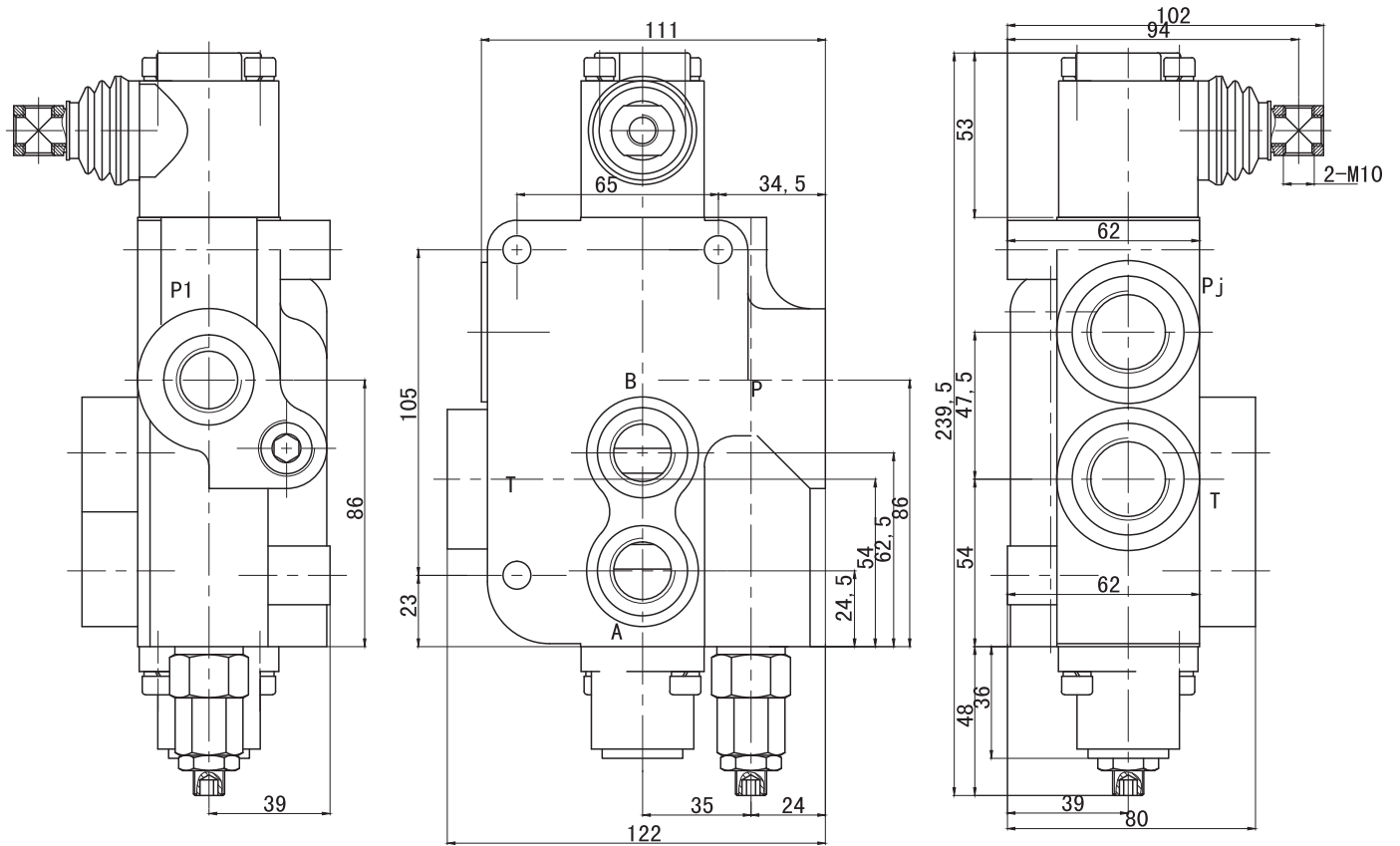
PARAMETERS

Nom. Pressure (MPa)	Max. Pressure (MPa)	Nom. Flow rate (L/min)	Max. Flow rate (L/min)	Back Pressure (MPa)	Hydraulic oil		
					Tem. rang (°C)	Visc. rang (mm ² /S)	Filtrating accuracy (µm)
20	31.5	80	80	≤1	-20~+80	10~400	10~400

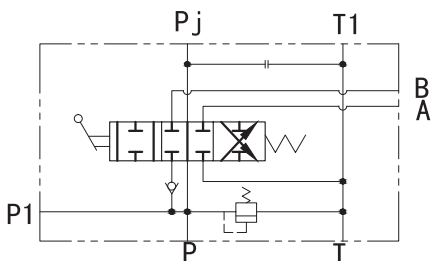
P80

P80 Series Monoblock Directional Control Valves

MODEL P80 DIMENSIONAL DATA



SCHEMATIC DIAGRAM



TECHNICAL PARAMETER

- 1. Nominal Pressure 20MPa
- 3. Rated Flow 80L/min

Note: Special features not listed can often be made to your specifications. Please consult your sales representative.